

simocoXd

Instant push-to-talk
digital voice
communications

VoIP connectivity

Open-standards
applications support

Simoco Xd Software Tools

DMR

 **simoco**
www.simocogroup.com

For more information please contact your local Simoco representative:

// Simoco Xd Management Software

Simoco Xd Management Software comprises a rich suite of applications to manage the infrastructure products by bringing fully integrated network management facilities to DMR communications networks.

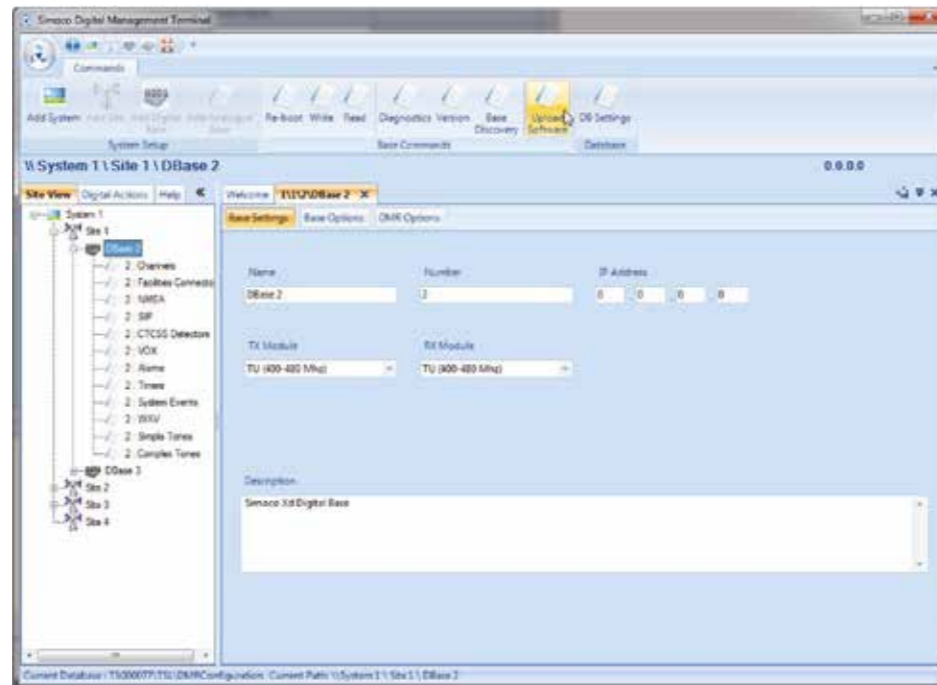
Simoco Xd Management Software is a range of PC based tools designed to configure and manage Simoco Xd Infrastructure. Building on experience gained in developing IP connected radio communications systems, Simoco Xd brings end-to-end digital communications to business and mission critical radio networks. Native IP connectivity brings the ability to remotely monitor and update all aspects of the system minimising down time and reducing site visits.



// Simoco Digital Management Terminal

// Simoco Diagnostic Monitor

The Simoco Digital Management Terminal (SDMT) is a comprehensive Network Management Terminal which is used to configure and manage Simoco Xd infrastructure. IP connectivity allows either local or remote operation.



Features

- Configuration of Tier II and Tier III systems
- Base station programming
- Subscriber management
- Channel lists
- Event actions
- SIP trunk configuration
- Base station software upgrade

Benefits

- Full control of all Simoco Xd base station parameters
- IP Connectivity allows remote configuration of a base station no matter where it is on the network
- System independence allows configurations to be created offline and verified before uploading
- Software upgrade facility enables remote updating of Simoco Xd base stations either individually or in groups
- Wide selection of configurable event actions to tailor the radio system to individual user needs
- Employment of user roles provides system security and prevents unauthorised editing of critical system parameters
- Connects direct to the Simoco Xd network. No additional hardware interface is required.

PC Requirements

- Windows XP (SP3), Win7 32 or 64 bit operating system
- 2 gigahertz (GHz) or faster 32-bit (x86) or 64-bit (x64) processor
- 1 gigabyte (GB) RAM (32-bit) or 2 GB RAM (64-bit)
- 150 GB available hard disk space
- DirectX 9 graphics device with WDDM 1.0 or higher driver
- 1024 x 768 monitor
- 10/100 ethernet port, sound card, CD drive and USB port

The Simoco Diagnostic Monitor allows real time monitoring of the status of a Simoco Xd DMR repeater.



Features

- Graphical Display
- Transmit Power Monitor
- Display Cooling Fan Speed
- Received Signal Strength Indicator
- Monitor Repeater Call Activity
- Check Software Version

Benefits

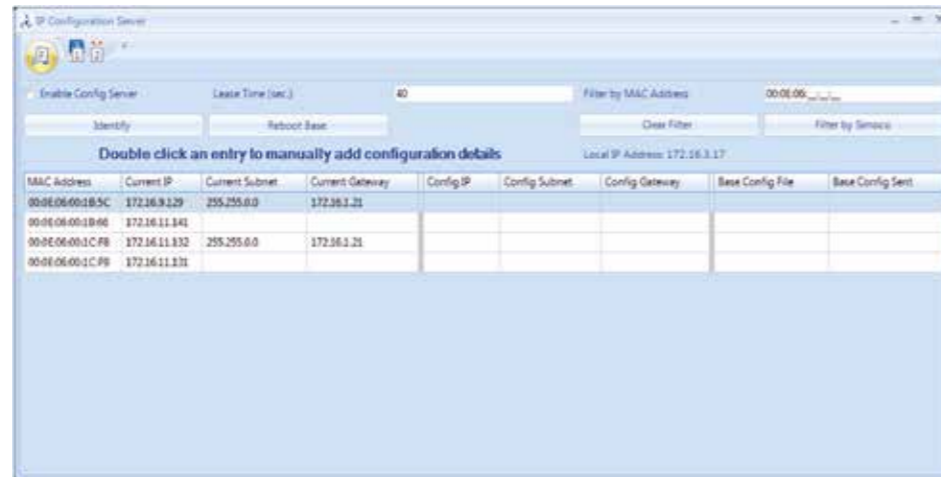
- Real time monitoring of repeater status from SDMT or Command Monitor
- Bring the front panel indicators of any Simoco Xd base station onto a PC monitor using the graphical display
- Instantly assess the severity of base station alarms
- Check performance in analogue and digital operating modes

PC Requirements

- Windows XP (SP3), Win7 32 or 64 bit operating system
- 2 gigahertz (GHz) or faster 32-bit (x86) or 64-bit (x64) processor
- 1 gigabyte (GB) RAM (32-bit) or 2 GB RAM (64-bit)
- 150 GB available hard disk space
- DirectX 9 graphics device with WDDM 1.0 or higher driver
- 1024 x 768 monitor
- 10/100 ethernet port, sound card, CD drive and USB port

// IP Configuration Tool

Essential for both system configuration and field support scenarios. The IP Configuration Tool is a utility which is used to set and edit the IP configuration parameters of Simoco Xd DMR repeaters.



Features

- Set IP address
- Set subnet mask
- Set gateway IP address
- Set broadcast IP address
- Base identity
- IP configuration discovery

Benefits

- Remotely configure Simoco Xd base stations via IP
- Discover the IP Configuration of a previously configured base station
- Store and manage IP configuration files for multiple base stations using .csv files
- Quickly locate a specific base in an equipment room using base identity

PC Requirements

- Windows XP (SP3), Win7 32 or 64 bit operating system
- 2 gigahertz (GHz) or faster 32-bit (x86) or 64-bit (x64) processor
- 1 gigabyte (GB) RAM (32-bit) or 2 GB RAM (64-bit)
- 150 GB available hard disk space
- DirectX 9 graphics device with WDDM 1.0 or higher driver
- 1024 x 768 monitor
- 10/100 ethernet port, sound card, CD drive and USB port

// Command Monitor

The Simoco Xd Command Monitor enables system supervisors and maintainers to interrogate and analyse system alarm records.

